



Assuring the right flow is our business.





ABOUT US

PETROSTAR VALVE

A name synonymous with quality. With skills sharpened by many years we offer a versatile range of durable valves, which ensures lowest ownership cost and long period of trouble free operations.

We believe in long term relationship with our customers. That is why we adhere to highest quality design, manufacturing, delivery and after sales service. We achieve this by making every person in our organization subscribe to quality procedures & methods and continuous training programs that let our quality system evolve.

Our manufacturing range covers Ball, Gate, Globe, Check, Plug and Butterfly valves with almost all kinds of metallurgy used in the Oil & Gas, Petrochemical and Chemical industries. Petrostar offers valves in ASME Class 150, 300, 600, 900, 1500 and 2500 ratings. Other standard ratings and designs are available on request. This has taken us further to reach our goal of leading the industry by becoming the most versatile and reliable valve manufacturer.

PETROSTAR MANUFACTURING PROGRAM

Valve Type	ASME Class	2	2½	3	4	5	6	8	10	12	14	16	18	20	24	28	30	34	36	42	48	60	
Cast Steel Gate Valve	150																						
	300																						
	600																						
	900																						
	1500																						
Cast Steel Slab Gate Valve	150																						
	300																						
	600																						
Cast Steel Check Valve	150																						
	300																						
	600																						
	900																						
	1500																						
Forged Steel Trunnion Mounted Ball Valve	150																						
	300																						
	600																						
	900																						
	1500																						
	2500																						
Cast Steel Trunnion Mounted Ball Valve	150																						
	300																						
	600																						
	900																						
All Welded Ball Valve	600																						
	900																						
	1500																						
Top Entry Trunnion Mounted Ball Valve	150																						
	300																						
	600																						
	900																						
Cast Steel Globe Valve	150																						
	300																						
	600																						
	900																						
	1500																						
Valve Type	ASME Class	¼	⅜	½	¾	1	1¼	1½	2	2½	3	4	5	6	8	10	12	14	16	18	20	24	
Forged Steel Gate Valve	800																						
	1500																						
	2500																						
Forged Steel Globe Valve	800																						
	1500																						
	2500																						
Forged Steel Check Valve	800																						
	1500																						
	2500																						
Forged Steel Ball Valve	800																						
	1500																						
	2500																						
Cast Steel Floating Ball Valve	150																						
	300																						
	600																						
Valve Type	ASME Class	6	8	10	12	14	16	18	20	24	28	30	34	36	42	48	60	72	80	88	96	100	
Butterfly Valve	150																						
	300																						
	600																						

PETROSTAR QUALITY CONTROL PROGRAM (API 600/ISO 10434)

The Petrostar Quality Control Program was implemented to set the quality control standards for pressure boundary castings, and to ensure a consistent supply of quality castings to Petrostar.

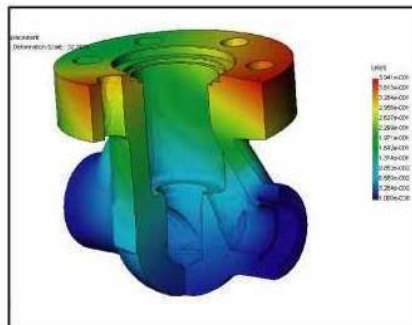
1. X-Ray Sample (pattern) Approval Process;
2. X-Ray Monitoring Program;
3. Casting Monitoring Program.

SAMPLE CASTINGS

Before castings are released for production, the Petrostar NDE Inspector Level III, evaluates and approves the submitted x-ray films (100% coverage) as per API 600

X-RAY MONITORING:

Random x-ray monitoring requires that castings taken every six months from each vendor, randomly by size and quantity sets and x-rayed per B16.34 requirement.

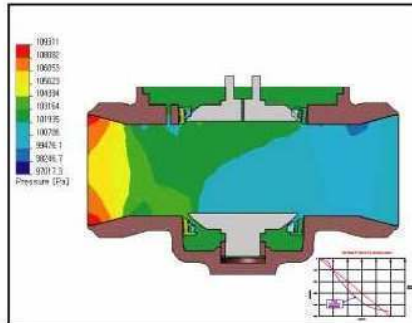


Pro-Engineering model casting simulation program.

If casting fails to meet the x-ray requirements of B16.34, PETROSTAR Senior Metallurgist will issue a corrective action request to the vendor, including recommendations for detailed methoding change and re-x-ray.

CASTING MONITORING:

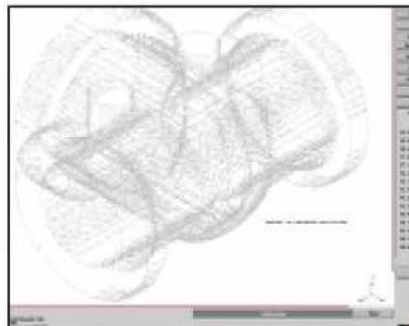
Rejected castings due to defects such as hydro-test leakage, porosity, inclusions, shrinkage indication discovered by x-ray or machining, are entered into the computer, as part of the statistical control of each vendor.



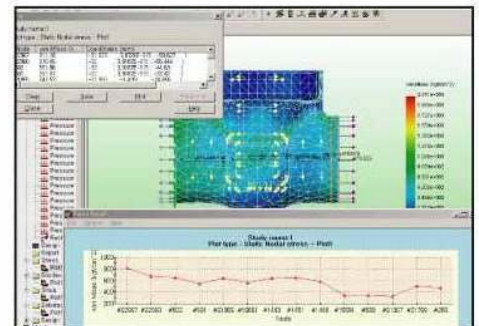
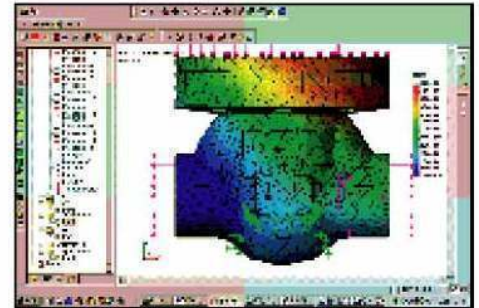
FINITE ELEMENT ANALYSIS

Petrostar applies Finite Element Analysis for assistance at it's design facilities.

Working together with foundry engineers and our designers, we continue improving the internal integrity of castings, to X-Ray Level II or better as a general standard.



No shrinkage on a forged steel gate valve body simulation.



Benefits to Petrostar customers and to the foundries:

- Shorter delivery time,
- Higher quality of commercial castings,
- Optimum methoding system,
- Elimination of trial at sample approval,
- Improves the internal integrity of castings (RT level 2 or better) at pattern approval,
- Optimizes the metal flow and solidification pattern,
- Predicts internal defects,
- Reduces scrap,
- Optimizes the design of the castings,
- Solves problems such as shrinkage and porosity, without test castings,
- Reduces NDE (x-ray) upgrading.



VALVES IN WORK FIELD



Petrostar valves are widely applied to the field of petroleum, chemical, metallurgical, power, fuel gas, city pipeline networks and so on.



14" CLASS 300 CF8 gate valve, after cryogenic treatment.



Assembly of trunnion mounted ball valve



Ware house

Petrostar Valve manufactures valves with standard treated material, and is capable of supplying valves with special testing like radiographic examination, ultrasonic examination, dye penetrant testing, low temperature impact testing, xylon coating, PTFE coating, etc.

We offer wide ranges of metallurgy including duplex, super duplex, monel, inconel, copper, bronze, etc.

Besides common valves, we also offer special valves like cryogenic valves, bonnet extended valves, top entry and all-welded ball valve, wafer ball valve, metal seated ball valve, soft seated gate valve, bellow sealed globe valve, etc.



Dye penetrant test



Fine lapping of ball



Testing of 30" 300# top entry ball valve



Class 600 6" ball valve, with primer.



Testing electric actuator



Lathe in service



USA

1200, Smith Street

1600, Houston, Tx

Tel (713) 3533917

Fax(713) 3534601

e-mail sales@petrostarvalve.com

Middle East

D-4, SAIF Zone

Sharjah, UAE

Tel (971) 6 5571740

Fax(971) 6 5571750

e-mail me@petrostarvalve.com


PETROSTAR VALVE - ROK

162-1, Yuhari, Jang Yu-meyon

Gimhae City, Gyeongnam

Republic Of Korea.

www.petrostarvalve.com

 As we continuously endeavor to improve our products, the data given herein are subject to change without notice.